



Thread Gages: Stocked in the USA and ready to ship!

UNC

	Size (in)	EDP No.	List \$	Sale \$
2B Class of Fit	#1-64	L0100100.5000	123.07	110.76
	#2-56	L0100100.5001	116.98	105.28
	#3-48	L0100100.5002	99.53	89.58
	#4-40	L0100100.5003	97.42	87.68
	#5-40	L0100100.5004	91.32	82.19
	#6-32	L0100100.5005	89.68	80.71
	#8-32	L0100100.5006	86.14	77.53
	#10-24	L0100100.5007	84.04	75.64
	#12-24	L0100100.5008	80.43	72.39
	1/4-20	L0100100.5009	79.50	71.55
	5/16-18	L0100100.5010	83.57	75.21
	3/8-16	L0100100.5011	85.14	76.63
7/16-14	L0100100.5012	88.74	79.87	
1/2-13	L0100100.5013	96.95	87.26	
9/16-12	L0100100.5014	100.46	90.41	
5/8-11	L0100100.5015	104.54	94.09	
3/4-10	L0100100.5016	118.85	106.97	
7/8-9	L0100100.5017	138.41	124.57	
1"-8	L0100100.5018	152.83	137.55	
1 1/8-7	L0100100.5019	173.31	155.98	
1 1/4-7	L0100100.5020	173.31	155.98	
1 3/8-6	L0100100.5021	205.00	184.50	
1 1/2-6	L0100100.5022	223.55	201.20	
3B Class of Fit	#1-64	L0100110.5000	148.29	133.46
	#2-56	L0100110.5001	140.94	126.85
	#3-48	L0100110.5002	119.92	107.93
	#4-40	L0100110.5003	117.36	105.62
	#5-40	L0100110.5004	110.02	99.02
	#6-32	L0100110.5005	108.05	97.25
	#8-32	L0100110.5006	103.80	93.42
	#10-24	L0100110.5007	101.25	91.13
	#12-24	L0100110.5008	96.92	87.23
	1/4-20	L0100110.5009	95.78	86.20
	5/16-18	L0100110.5010	100.68	90.61
	3/8-16	L0100110.5011	102.10	91.89
7/16-14	L0100110.5012	106.65	95.99	
1/2-13	L0100110.5013	113.84	102.46	
9/16-12	L0100110.5014	118.85	106.97	
5/8-11	L0100110.5015	126.12	113.51	
3/4-10	L0100110.5016	143.58	129.22	
7/8-9	L0100110.5017	166.76	150.08	
1"-8	L0100110.5018	184.12	165.71	
1 1/8-7	L0100110.5019	208.81	187.93	
1 1/4-7	L0100110.5020	208.81	187.93	
1 3/8-6	L0100110.5021	246.99	222.29	
1 1/2-6	L0100110.5022	289.34	242.41	

UNF

	Size (in)	EDP No.	List \$	Sale \$
2B Class of Fit	#0-80	L0100100.5033	146.62	131.96
	#1-72	L0100100.5034	123.07	110.76
	#2-64	L0100100.5035	116.98	105.28
	#3-56	L0100100.5036	109.70	98.73
	#4-48	L0100100.5037	97.42	87.68
	#5-44	L0100100.5038	91.32	82.19
	#6-40	L0100100.5039	89.68	80.71
	#8-36	L0100100.5040	86.14	77.53
	#10-32	L0100100.5041	84.04	75.64
	#12-28	L0100100.5042	81.53	73.38
	1/4-28	L0100100.5043	80.43	72.39
	5/16-24	L0100100.5044	83.57	75.21
3/8-24	L0100100.5045	85.14	76.63	
7/16-20	L0100100.5046	88.74	79.87	
1/2-20	L0100100.5047	96.95	87.26	
9/16-18	L0100100.5048	100.15	90.14	
5/8-18	L0100100.5049	102.60	92.34	
3/4-16	L0100100.5050	112.74	101.47	
7/8-14	L0100100.5051	127.16	114.44	
1"-12	L0100100.5052	141.47	127.32	
1 1/8-12	L0100100.5053	152.50	137.25	
1 1/4-12	L0100100.5054	164.07	147.66	
1 3/8-12	L0100100.5055	179.42	161.48	
1 1/2-12	L0100100.5056	200.00	180.00	
3B Class of Fit	#0-80	L0100110.5033	176.67	159.00
	#1-72	L0100110.5034	148.29	133.46
	#2-64	L0100110.5035	140.94	126.85
	#3-56	L0100110.5036	132.17	118.95
	#4-48	L0100110.5037	117.36	105.62
	#5-44	L0100110.5038	110.02	99.02
	#6-40	L0100110.5039	108.05	97.25
	#8-36	L0100110.5040	103.80	93.42
	#10-32	L0100110.5041	101.25	91.13
	#12-28	L0100110.5042	98.23	88.41
	1/4-28	L0100110.5043	96.92	87.23
	5/16-24	L0100110.5044	100.68	90.61
3/8-24	L0100110.5045	102.10	91.89	
7/16-20	L0100110.5046	106.65	95.99	
1/2-20	L0100110.5047	113.84	102.46	
9/16-18	L0100110.5048	118.85	106.97	
5/8-18	L0100110.5049	123.07	110.76	
3/4-16	L0100110.5050	135.37	121.83	
7/8-14	L0100110.5051	153.21	137.89	
1"-12	L0100110.5052	170.45	153.41	
1 1/8-12	L0100110.5053	183.74	165.37	
1 1/4-12	L0100110.5054	197.68	177.91	
1 3/8-12	L0100110.5055	216.16	194.54	
1 1/2-12	L0100110.5056	240.95	216.86	

UNEF

	Size (in)	EDP No.	List \$	Sale \$	
2B Class of Fit	1/4-32	L0100100.5058	117.38	105.64	
	5/16-32	L0100100.5059	120.93	108.84	
	3/8-32	L0100100.5060	128.14	115.33	
	7/16-28	L0100100.5061	131.69	118.52	
	1/2-28	L0100100.5062	134.02	120.62	
	9/16-24	L0100100.5063	137.68	123.91	
	5/8-24	L0100100.5064	142.43	128.19	
	3/4-20	L0100100.5066	151.97	136.77	
	7/8-20	L0100100.5068	167.60	150.84	
	1"-20	L0100100.5070	184.44	166.00	
	3B Class of Fit	1/4-32	L0100110.5058	538.98	485.08
		5/16-32	L0100110.5059	612.20	550.98
3/8-32		L0100110.5060	622.11	559.90	
7/16-28		L0100110.5061	627.42	564.68	
1/2-28		L0100110.5062	632.04	568.84	
9/16-24		L0100110.5063	647.29	582.56	
5/8-24		L0100110.5064	652.63	587.37	
7/8-20		L0100110.5068	786.13	707.52	
1"-20		L0100110.5070	820.45	738.41	



STI UNC

	Size (in)	EDP No.	List \$	Sale \$
2B Class of Fit	#2-56	L0100100.5609	139.36	125.42
	#4-40	L0100100.5611	117.17	105.45
	#5-40	L0100100.5612	109.74	98.77
	#6-32	L0100100.5613	107.04	96.34
	#8-32	L0100100.5614	102.66	92.39
	#10-24	L0100100.5615	100.62	90.56
	#12-24	L0100100.5616	96.58	86.92
	1/4-20	L0100100.5617	95.21	85.69
	5/16-18	L0100100.5618	100.12	90.11
	3/8-16	L0100100.5619	101.47	91.32
	7/16-14	L0100100.5620	106.04	95.44
	1/2-13	L0100100.5621	113.30	101.97
9/16-12	L0100100.5622	119.22	107.30	
5/8-11	L0100100.5623	123.09	110.78	
3/4-10	L0100100.5624	140.20	126.18	
7/8-9	L0100100.5625	163.08	146.77	
1"-8	L0100100.5626	177.10	159.39	



STI UNC (CONT.)

	Size (in)	EDP No.	List \$	Sale \$
3B Class of Fit	#2-56	L0100110.5609	168.12	151.31
	#4-40	L0100110.5611	138.13	124.32
	#5-40	L0100110.5612	139.85	117.77
	#6-32	L0100110.5613	129.11	116.20
	#8-32	L0100110.5614	129.75	111.38
	#10-24	L0100110.5615	121.33	109.20
	#12-24	L0100110.5616	116.48	104.83
	1/4-20	L0100110.5617	114.75	103.28
	5/16-18	L0100110.5618	129.80	108.72
	3/8-16	L0100110.5619	121.54	109.39
	7/16-14	L0100110.5620	128.09	115.28
	1/2-13	L0100110.5621	135.18	121.66
	9/16-12	L0100110.5622	149.20	126.18
	5/8-11	L0100110.5623	148.01	133.21
	3/4-10	L0100110.5624	168.08	151.27
	7/8-9	L0100110.5625	199.20	173.88
	1"-8	L0100110.5626	219.00	189.00

STI UNF

	Size (in)	EDP No.	List \$	Sale \$
2B Class of Fit	#4-48	L0100100.5633	114.31	102.88
	#6-40	L0100100.5635	107.04	96.34
	#8-36	L0100100.5636	102.66	92.39
	#10-32	L0100100.5637	109.62	90.56
	1/4-28	L0100100.5639	95.21	85.69
	5/16-24	L0100100.5640	109.12	90.11
	3/8-24	L0100100.5641	101.47	91.32
	7/16-20	L0100100.5642	106.04	95.44
	1/2-20	L0100100.5643	119.30	101.97
	9/16-18	L0100100.5644	119.22	107.30
3B Class of Fit	5/8-18	L0100100.5645	123.09	110.78
	3/4-16	L0100100.5646	135.14	121.63
	7/8-14	L0100100.5647	151.69	136.52
	1"-12	L0100100.5648	168.66	151.79
	#4-48	L0100110.5633	138.13	124.32
	#6-40	L0100110.5635	129.11	116.20
	#8-36	L0100110.5636	123.75	111.38
	#10-32	L0100110.5637	121.33	109.20
	1/4-28	L0100110.5639	114.75	103.28
	5/16-24	L0100110.5640	129.80	108.72
	3/8-24	L0100110.5641	121.54	109.39
	7/16-20	L0100110.5642	128.09	115.28
1/2-20	L0100110.5643	135.18	121.66	
9/16-18	L0100110.5644	149.20	126.18	
5/8-18	L0100110.5645	148.01	133.21	
3/4-16	L0100110.5646	162.02	145.82	
7/8-14	L0100110.5647	184.00	165.60	
1"-12	L0100110.5648	202.42	182.18	



NPT

Size (in)	EDP No.	List \$	Sale \$
1/16-27	L0500100.5763	227.62	204.86
1/8-27	L0500100.5764	237.94	214.15
1/4-18	L0500100.5765	254.30	228.87
3/8-18	L0500100.5766	276.83	249.15
1/2-14	L0500100.5767	295.30	265.77
3/4-14	L0500100.5768	338.42	304.58
1"-11-1/2	L0500100.5769	389.67	350.70



METRIC/ANSI*

Size (in)	EDP No.	List \$	Sale \$	
M 1.6 x 0.35	LU100100.0016	205.51	184.96	
M 2 x 0.4	LU100100.0020	131.30	118.17	
M 2.5 x 0.45	LU100100.0025	91.57	82.41	
M 3 x 0.5	LU100100.0030	112.91	101.62	
M 3.5 x 0.6	LU100100.0035	109.95	98.96	
M 4 x 0.7	LU100100.0040	98.42	88.58	
M 5 x 0.8	LU100100.0050	109.95	98.96	
M 6 x 1	LU100100.0060	91.84	82.66	
6H Class of Fit	M 8 x 1.25	LU100100.0080	91.84	82.66
	M 10 x 1.5	LU100100.0100	73.86	66.47
	M 11 x 1.5	LU100100.0111	92.48	83.23
	M 12 x 1.75	LU100100.0112	92.90	83.61
	M 14 x 2	LU100100.0114	129.67	108.60
	M 16 x 2	LU100100.0116	107.90	97.11
	M 18 x 2.5	LU100100.0118	134.35	120.92
	M 20 x 2.5	LU100100.0120	129.87	116.88
	M 22 x 2.5	LU100100.0122	148.38	133.54
	M 24 x 3	LU100100.0124	167.07	150.36
M 30 x 3.5	LU100100.0130	182.68	164.41	
M 36 x 4	LU100100.0136	194.09	174.68	

METRIC FINE/ANSI*

Size (in)	EDP No.	List \$	Sale \$
M 5 x 0.5	LU100100.0218	108.00	97.20
M 6 x 0.75	LU100100.0229	153.45	138.11
M 8 x 0.75	LU100100.0250	103.78	93.40
M 8 x 1	LU100100.0251	138.00	124.20
M 10 x 1	LU100100.0276	144.86	130.37
M 10 x 1.25	LU100100.0277	138.00	124.20
M 12 x 1.25	LU100100.0302	147.45	132.71
M 12 x 1.5	LU100100.0303	145.17	130.65
M 14 x 1.5	LU100100.0331	153.45	138.11
M 15 x 1.5	LU100100.0345	154.13	138.72
M 16 x 1.5	LU100100.0359	159.25	143.33
M 18 x 1.5	LU100100.0390	166.44	149.80
M 20 x 1.5	LU100100.0422	175.95	158.36
M 22 x 1.5	LU100100.0438	184.02	165.62

NPTF

Size (in)	EDP No.	List \$	Sale \$
1/16-27	L0520100.5782	483.45	417.11
1/8-27	L0520100.5783	488.01	439.21
1/4-18	L0520100.5784	506.56	455.90
3/8-18	L0520100.5785	543.42	489.08
1/2-14	L0520100.5786	594.67	535.20
3/4-14	L0520100.5787	656.18	590.56

METRIC/DIN**

Size (in)	EDP No.	List \$	Sale \$	
5H Class of Fit	M 1 x 0.25	L0100100.0010	205.51	184.96
	M 1.1 x 0.25	L0100100.0011	205.51	184.96
	M 1.2 x 0.25	L0100100.0012	205.51	184.96
	M 1.4 x 0.3	L0100100.0014	205.51	184.96
6H Class of Fit	M 1.6 x 0.35	L0100100.0016	205.51	184.96
	M 1.7 x 0.35	L0100100.0017	205.51	184.96
	M 1.8 x 0.35	L0100100.0018	205.51	184.96
	M 2 x 0.4	L0100100.0020	131.30	118.17
	M 2.2 x 0.45	L0100100.0022	137.00	123.30
	M 2.3 x 0.4	L0100100.0023	137.00	123.30
	M 2.5 x 0.45	L0100100.0025	137.00	123.30
	M 2.6 x 0.45	L0100100.0026	137.00	123.30
	M 3 x 0.5	L0100100.0030	111.89	100.70
	M 3.5 x 0.6	L0100100.0035	109.61	98.65
	M 4 x 0.7	L0100100.0040	98.19	88.37
	M 4.5 x 0.75	L0100100.0045	102.75	92.48
	M 5 x 0.8	L0100100.0050	109.61	98.65
	M 6 x 1	L0100100.0060	91.34	82.21
	M 7 x 1	L0100100.0070	137.58	123.82
	M 8 x 1.25	L0100100.0080	91.34	82.21
	M 9 x 1.25	L0100100.0090	105.04	94.54
	M 10 x 1.5	L0100100.0100	73.65	66.29
M 11 x 1.5	L0100100.0111	75.35	67.82	
M 12 x 1.75	L0100100.0112	92.48	83.23	
M 14 x 2	L0100100.0114	129.46	108.41	
M 16 x 2	L0100100.0116	107.90	97.11	
M 18 x 2.5	L0100100.0118	134.16	120.74	
M 20 x 2.5	L0100100.0120	129.87	116.88	
M 22 x 2.5	L0100100.0122	147.85	133.07	
M 24 x 3	L0100100.0124	166.70	150.03	
M 27 x 3	L0100100.0127	176.97	159.27	
M 30 x 3.5	L0100100.0130	182.68	164.41	
M 33 x 3.5	L0100100.0133	216.93	195.24	
M 36 x 4	L0100100.0136	194.09	174.68	
M 39 x 4	L0100100.0139	279.72	251.75	

* Gage dimensions according to ANSI B1.16M

** Gage dimensions according to DIN ISO 1502



METRIC FINE/DIN**

Size (in)	EDP No.	List \$	Sale \$
M 2.5 x 0.35	L0100100.0196	137.00	123.30
M 2.6 x 0.35	L0100100.0199	137.00	123.30
M 3 x 0.35	L0100100.0202	125.59	113.03
M 3.5 x 0.35	L0100100.0205	125.59	113.03
M 4 x 0.35	L0100100.0209	125.59	113.03
M 4 x 0.5	L0100100.0210	125.59	113.03
M 4.5 x 0.5	L0100100.0214	125.59	113.03
M 5 x 0.35	L0100100.0217	154.56	139.10
M 5 x 0.5	L0100100.0218	107.90	97.11
M 5 x 0.75	L0100100.0219	136.50	122.85
M 6 x 0.35	L0100100.0227	150.89	135.80
M 6 x 0.5	L0100100.0228	119.88	107.89
M 6 x 0.75	L0100100.0229	152.99	137.69
M 7 x 0.75	L0100100.0239	154.13	138.72
M 8 x 0.5	L0100100.0249	108.47	97.62
M 8 x 0.75	L0100100.0250	103.33	93.00
M 8 x 1	L0100100.0251	137.58	123.82
M 9 x 0.75	L0100100.0262	138.92	125.03
M 9 x 1	L0100100.0263	137.58	123.82
M 10 x 0.5	L0100100.0274	147.33	132.60
M 10 x 0.75	L0100100.0275	148.42	133.58
M 10 x 1	L0100100.0276	144.44	130.00
M 10 x 1.25	L0100100.0277	137.58	123.82
M 11 x 0.75	L0100100.0287	142.38	128.14
M 11 x 1	L0100100.0288	139.29	125.36
M 12 x 0.5	L0100100.0299	162.83	146.55
M 12 x 0.75	L0100100.0300	147.33	132.60
M 12 x 1	L0100100.0301	154.13	138.72
M 12 x 1.25	L0100100.0302	147.27	132.54
M 12 x 1.5	L0100100.0303	145.01	130.51
M 13 x 1	L0100100.0315	137.58	123.82
M 13 x 1.5	L0100100.0317	137.58	123.82
M 14 x 1	L0100100.0329	141.58	127.42
M 14 x 1.25	L0100100.0330	141.58	127.42
M 14 x 1.5	L0100100.0331	153.45	138.11
M 15 x 1	L0100100.0343	154.13	138.72
M 15 x 1.5	L0100100.0345	154.13	138.72
M 16 x 0.5	L0100100.0355	183.23	164.91
M 16 x 0.75	L0100100.0356	173.67	156.30
M 16 x 1	L0100100.0357	154.13	138.72
M 16 x 1.5	L0100100.0359	158.70	142.83
M 17 x 1	L0100100.0372	160.99	144.89
M 17 x 1.5	L0100100.0374	160.99	144.89
M 18 x 1	L0100100.0388	166.13	149.52
M 18 x 1.5	L0100100.0390	166.13	149.52
M 18 x 2	L0100100.0391	166.13	149.52
M 19 x 1	L0100100.0404	176.97	159.27
M 19 x 1.5	L0100100.0406	124.53	112.08
M 20 x 0.5	L0100100.0418	204.75	184.28
M 20 x 0.75	L0100100.0419	193.83	174.45

METRIC FINE/DIN** (CONT.)

Size (in)	EDP No.	List \$	Sale \$
M 20 x 1	L0100100.0420	137.00	123.30
M 20 x 1.5	L0100100.0422	175.82	158.24
M 20 x 2	L0100100.0423	137.00	123.30
M 21 x 1	L0100100.0428	182.68	164.41
M 21 x 1.5	L0100100.0430	135.35	121.82
M 22 x 1	L0100100.0436	183.81	165.43
M 22 x 1.5	L0100100.0438	183.81	165.43
M 22 x 2	L0100100.0439	183.81	165.43
M 23 x 1	L0100100.0443	197.53	177.78
M 24 x 1	L0100100.0450	193.53	174.18
M 24 x 1.5	L0100100.0452	193.53	174.18
M 24 x 2	L0100100.0453	198.10	178.29
M 25 x 1	L0100100.0456	211.22	190.10
M 25 x 1.5	L0100100.0458	211.22	190.10
M 25 x 2	L0100100.0459	211.22	190.10
M 26 x 1	L0100100.0462	211.22	190.10
M 26 x 1.5	L0100100.0464	211.22	190.10
M 26 x 2	L0100100.0465	211.22	190.10
M 27 x 1	L0100100.0468	239.76	215.78
M 27 x 1.5	L0100100.0470	239.76	215.78
M 27 x 2	L0100100.0471	239.76	215.78
M 28 x 1	L0100100.0474	239.76	215.78
M 28 x 1.5	L0100100.0476	239.76	215.78
M 28 x 2	L0100100.0477	239.76	215.78
M 30 x 0.75	L0100100.0487	280.25	252.23
M 30 x 1	L0100100.0488	205.51	184.96
M 30 x 1.5	L0100100.0490	205.51	184.96
M 30 x 2	L0100100.0491	205.51	184.96
M 30 x 3	L0100100.0492	205.51	184.96
M 32 x 1	L0100100.0502	211.22	190.10
M 32 x 1.5	L0100100.0504	211.22	190.10
M 32 x 2	L0100100.0505	211.22	190.10
M 33 x 1	L0100100.0509	216.93	195.24
M 33 x 1.5	L0100100.0511	216.93	195.24
M 33 x 2	L0100100.0512	216.93	195.24
M 33 x 3	L0100100.0513	216.93	195.24
M 34 x 1	L0100100.0516	222.64	200.38
M 34 x 1.5	L0100100.0518	222.64	200.38
M 34 x 2	L0100100.0519	222.64	200.38
M 35 x 1	L0100100.0523	222.64	200.38
M 35 x 1.5	L0100100.0525	222.64	200.38
M 35 x 2	L0100100.0526	222.64	200.38
M 36 x 1	L0100100.0530	216.93	195.24
M 36 x 1.5	L0100100.0532	216.93	195.24
M 36 x 2	L0100100.0533	216.93	195.24
M 36 x 3	L0100100.0534	216.93	195.24
M 38 x 1	L0100100.0544	216.93	195.24
M 38 x 1.5	L0100100.0546	239.76	215.78
M 38 x 2	L0100100.0547	239.76	215.78
M 39 x 1	L0100100.0551	239.76	215.78

METRIC FINE/DIN** (CONT.)

Size (in)	EDP No.	List \$	Sale \$
M 39 x 1.5	L0100100.0553	279.72	251.75
M 39 x 2	L0100100.0554	262.59	236.33
M 39 x 3	L0100100.0555	279.72	251.75
M 40 x 1	L0100100.0558	331.11	298.00
M 40 x 1.5	L0100100.0560	331.11	298.00
M 40 x 2	L0100100.0561	331.11	298.00
M 40 x 3	L0100100.0562	331.11	298.00



SELF-LOCK™ LK

Size (in)	EDP No.	List \$	Sale \$
#4-40	L0100100.5656	291.63	262.47
#6-32	L0100100.5658	270.81	243.73
#8-32	L0100100.5659	258.30	232.47
#10-24	L0100100.5660	252.81	227.53
#12-24	L0100100.5661	241.63	217.47
1/4-20	L0100100.5662	237.48	213.73
5/16-18	L0100100.5663	251.41	226.27
3/8-16	L0100100.5664	255.55	230.00
7/16-14	L0100100.5665	268.05	241.25
1/2-13	L0100100.5666	288.89	260.00
9/16-12	L0100100.5667	305.55	275.00
5/8-11	L0100100.5668	316.66	284.99
3/4-10	L0100100.5669	355.54	319.99
7/8-9	L0100100.5670	419.48	377.53
1"-8	L0100100.5671	458.29	412.46
#4-48	L0100100.5707	291.63	262.47
#6-40	L0100100.5709	270.81	243.73
#8-36	L0100100.5710	258.30	232.47
#10-32	L0100100.5711	252.81	227.53
1/4-28	L0100100.5713	241.63	217.47
5/16-24	L0100100.5714	251.24	226.12
3/8-24	L0100100.5715	255.55	230.00
7/16-20	L0100100.5716	268.05	241.25
1/2-20	L0100100.5717	288.89	260.00
9/16-18	L0100100.5718	305.55	275.00
5/8-18	L0100100.5719	316.66	284.99
3/4-16	L0100100.5720	355.54	319.99
M 3 x 0.5	L0100100.1046	227.44	204.70
M 4 x 0.7	L0100100.1048	216.69	195.02
M 5 x 0.8	L0100100.1050	210.65	189.59
M 6 x 1	L0100100.1052	191.01	171.91
M 8 x 1.25	L0100100.1054	210.65	189.59
M 10 x 1.5	L0100100.1056	216.58	194.92
M 12 x 1.75	L0100100.1058	230.62	207.56
M 14 x 2	L0100100.1059	261.04	234.94
M 16 x 2	L0100100.1060	275.38	247.84
M 20 x 2.5	L0100100.1062	335.21	301.69
M 24 x 3	L0100100.1064	404.70	364.23

** Gage dimensions according to DIN ISO 1502

GO

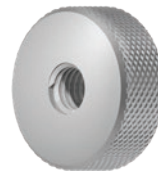


NO-GO

NEW UNC

	Size (in)**	GO RING GAGES EDP No.	NO-GO RING GAGES EDP No.	List \$	Sale \$
2A Tolerance	#2-56	L0200500.5001	L0300500.5001	119.83	107.85
	#4-40	L0200500.5003	L0300500.5003	95.77	86.19
	#6-32	L0200500.5005	L0300500.5005	89.44	80.50
	#8-32	L0200500.5006	L0300500.5006	84.47	76.02
	#10-24	L0200500.5007	L0300500.5007	82.54	74.29
	1/4-20	L0200500.5009	L0300500.5009	81.7	73.53
	5/16-18	L0200500.5010	L0300500.5010	85.73	77.16
	3/8-16	L0200500.5011	L0300500.5011	89.45	80.51
	7/16-14	L0200500.5012	L0300500.5012	95.77	86.19
	1/2-13	L0200500.5013	L0300500.5013	108.92	98.03
	9/16-12	L0200500.5014	L0300500.5014	118.49	106.64
	5/8-11	L0200500.5015	L0300500.5015	134.02	120.62
	3/4-10	L0200500.5016	L0300500.5016	145.29	130.76
	7/8-9	L0200500.5017	L0300500.5017	166.6	149.94
	1"-8	L0200500.5018	L0300500.5018	186.71	168.04
	1 1/4-7	L0200500.5020	L0300500.5020	241.87	217.68
	1 3/8-6	L0200500.5021	L0300500.5021	273.02	245.72
	1 1/2-6	L0200500.5022	L0300500.5022	287.43	258.69
	2" -4 1/2	L0200500.5024	L0300500.5024	383.09	344.78

GO



NO-GO

NEW UNF

	Size (in)**	GO RING GAGES EDP No.	NO-GO RING GAGES EDP No.	List \$	Sale \$
2A Tolerance	#0-80	L0200500.5033	L0300500.5033	146.46	131.81
	#2-64	L0200500.5035	L0300500.5035	119.83	107.85
	#4-48	L0200500.5037	L0300500.5037	95.77	86.19
	#6-40	L0200500.5039	L0300500.5039	89.44	80.50
	#8-36	L0200500.5040	L0300500.5040	84.47	76.02
	#10-32	L0200500.5041	L0300500.5041	82.53	74.28
	1/4-28	L0200500.5043	L0300500.5043	78.91	71.02
	5/16-24	L0200500.5044	L0300500.5044	85.73	77.16
	3/8-24	L0200500.5045	L0300500.5045	89.44	80.50
	7/16-20	L0200500.5046	L0300500.5046	95.77	86.19
	1/2-20	L0200500.5047	L0300500.5047	108.97	98.07
	5/8-18	L0200500.5049	L0300500.5049	134.04	120.64
	3/4-16	L0200500.5050	L0200500.5050	145.29	130.76
	7/8-14	L0200500.5051	L0300500.5051	166.54	149.89
	1"-12	L0200500.5052	L0300500.5052	186.71	168.04
	1 1/8-12	L0200500.5053	L0300500.5053	223.81	201.43
	1 1/4-12	L0200500.5054	L0300500.5054	241.87	217.68
	1 3/8-12	L0200500.5055	L0300500.5055	273.02	245.72
	1 1/2-12	L0200500.5056	L0300500.5056	287.43	258.69

NEW METRIC/DIN

	Size (mm)**	GO RING GAGES EDP No.	NO-GO RING GAGES EDP No.	List \$	Sale \$
6g Tolerance	M2 x .4	L0200500.0020	L0300500.0020	122.04	109.84
	M2.5 x .45	L0200500.0025	L0300500.0025	92.78	83.50
	M3 x .5	L0200500.0030	L0300500.0030	81.7	73.53
	M4 x .7	L0200500.0040	L0300500.0040	76.47	68.82
	M5 x .8	L0200500.0050	L0300500.0050	76.47	68.82
	M6 x 1	L0200500.0060	L0300500.0060	76.47	68.82
	M8 x 1.25	L0200500.0080	L0300500.0080	77.41	69.67
	M10 x 1.5	L0200500.0100	L0300500.0100	86.24	77.62
	M12 x 1.75	L0200500.0112	L0300500.0112	98.87	88.98
	M14 x 2	L0200500.0114	L0300500.0114	110.06	99.05
	M16 x 2	L0200500.0116	L0300500.0116	120.91	108.82
	M18 x 2.5	L0200500.0118	L0300500.0118	134.67	121.20
	M20 x 2.5	L0200500.0120	L0300500.0120	146.46	131.81
	M24 x 3	L0200500.0124	L0300500.0124	174.11	156.70
	M30 x 3.5	L0200500.0130	L0300500.0130	206.01	185.41
	M36 X 4	L0200500.0136	L0300500.0136	265.69	239.12
	M42 X 4.5	L0200500.0142	L0300500.0142	304.16	273.74
	M56 X 5.5	L0200500.0156	L0300500.0156	392.73	353.46
	M68 X 6	L0200500.0168	L0300500.0168	471.77	424.59

NEW METRIC FINE/DIN

	Size (mm)**	GO RING GAGES EDP No.	NO-GO RING GAGES EDP No.	List \$	Sale \$
6g Tolerance	M8 x 1	L0200500.0251	L0300500.0251	84.47	76.02
	M10 x 1	L0200500.0276	L0300500.0276	93.44	84.10
	M10 x 1.25	L0200500.0277	L0300500.0277	105.39	94.85
	M12 x 1	L0200500.0301	L0300500.0301	105.39	94.85
	M12 x 1.25	L0200500.0302	L0300500.0302	117.38	105.64
	M12 x 1.5	L0200500.0303	L0300500.0303	102.3	92.07
	M14 x 1	L0200500.0329	L0300500.0329	113.18	101.86
	M14 x 1.25	L0200500.0330	L0300500.0330	132.91	119.62
	M14 x 1.5	L0200500.0331	L0300500.0331	110.07	99.06
	M16 x 1	L0200500.0357	L0300500.0357	120.93	108.84
	M16 x 1.5	L0200500.0359	L0300500.0359	118.49	106.64
	M20 x 1	L0200500.0420	L0300500.0420	137.92	124.13
	M20 x 1.5	L0200500.0422	L0300500.0422	135.85	122.27
	M24 x 1	L0200500.0450	L0300500.0450	160.16	144.14
	M24 x 1.5	L0200500.0452	L0300500.0452	155.27	139.74
	M30 X 1	L0200500.0488	L0300500.0488	204.74	184.27
	M36 X 2	L0200500.0533	L0300500.0533	222.69	200.42
	M42 X 1.5	L0200500.0574	L0300500.0574	261.04	234.94
	M48 X 1	L0200500.0614	L0300500.0614	304.16	273.74

Distributed by:

All Industrial
TOOL SUPPLY

All Industrial Tool Supply
5482 Commercial Drive
Huntington Beach, CA 92649
(714) 897-1700
www.allindustrial.com

10% OFF
Valid Until 4/30/2023