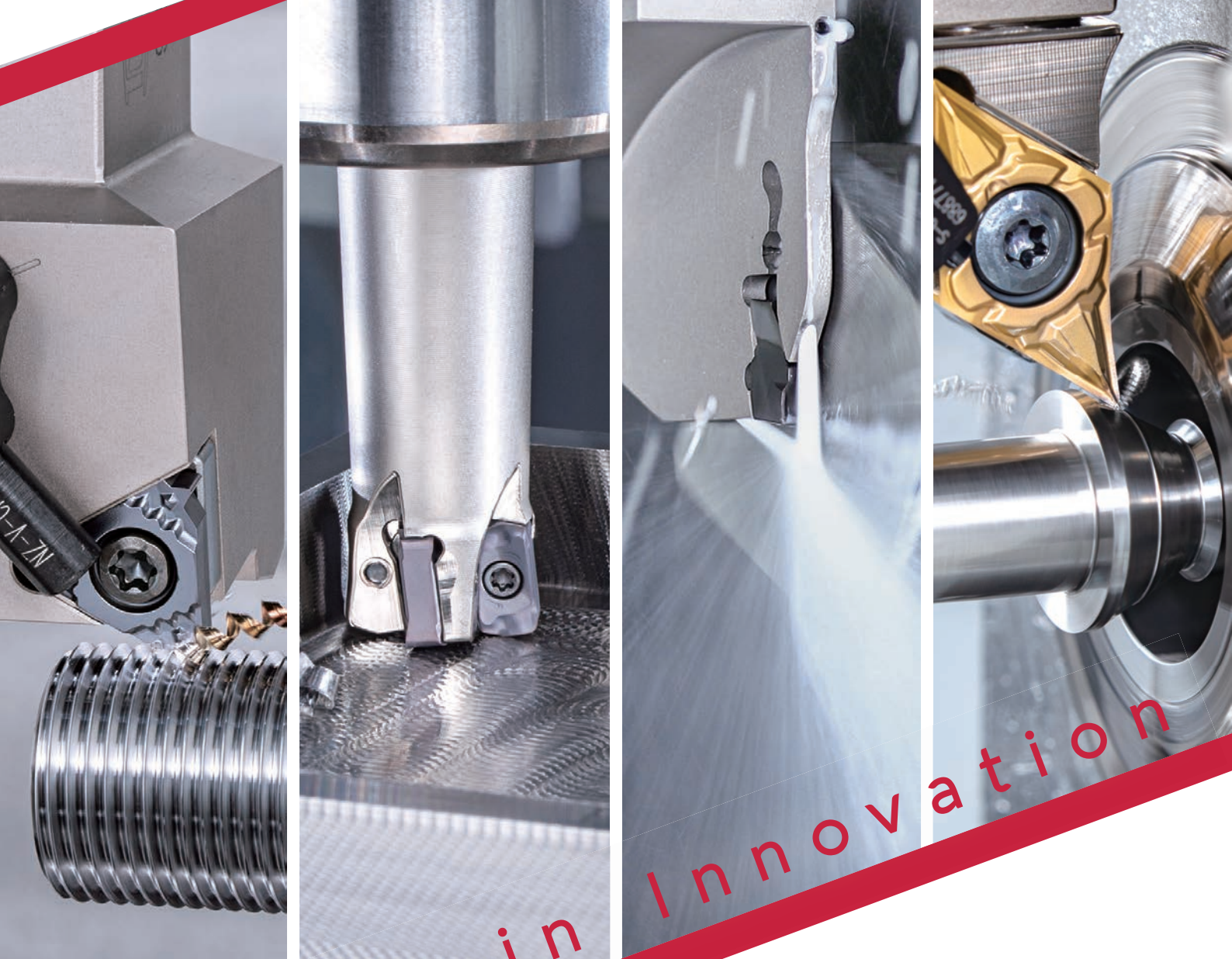


1st half **2024** **PROMOTIONS**



Leading in Innovation



Valid from 1st January to 30th June, 2024

www.tungaloy.com/us

SH7025

Valid from 1st January to 30th June, 2024



ACHIEVE ULTIMATE SURFACE QUALITY MACHINING SMALL PARTS RELIABLY!

A unique design that prevents adhesion, wear, and chipping of the cutting edge, ensuring prolonged life and consistently high-quality machined surfaces.

BUY 40 inserts

AND

GET 10 corresponding inserts

FREE
of charge!

Insert geometry:

- CCGT
- DCGT
- VBGT
- VPGT

Chipbreaker type:

- 01
- J10
- JP
- JS
- W08



Video



For more information



MODULAR HEAD TURNING TOOLHOLDER SYSTEM FOR SWISS MACHINES

Significantly reduces machine downtime for changing tools and setups

BUY 1 head and **10** inserts

AND

GET 1 corresponding CHP head

50 %
additional
discount!

BUY 1 head and **10** inserts

AND

GET 1 corresponding shank

FREE
of charge!



ModuMiniTurn inserts (Turning)

DX*U07
VXGU09
WXGU04

MiniV-LockGroove inserts (Grooving & Threading)

VGP10
VGT10

TetraMiniCut (Grooving & Threading)

TCG18...
TCP18...
TCS18...
TCL18...
TCF18...
TCT18...

Inserts:

11ER... (Threading)
J10R... (Back turning)

TungCut inserts (Grooving)

DGM...
DGS...
DTE...
DTX...
DTR...
DTM...
DGL...

CW = 0.047" - 0.125"

Grades:

AH6235, AH7025, AH8005,
AH905, KS05F, NS9530,
T9225, T515

AH725

(DGS1.2-003, DGS1.4-005,
DGS1.4-010, DGS2-005,
DGS2-010)

Video



For more information

EFFECTIVE THREADING SOLUTIONS FOR CNC LATHES, SWISS-TYPE LATHES AND MULTITASKING MACHINES

AH8015 versatile PVD grade for superior wear and chipping resistance in a wide range of materials

BUY 20 inserts

AND

GET 5 corresponding inserts

FREE
of charge!

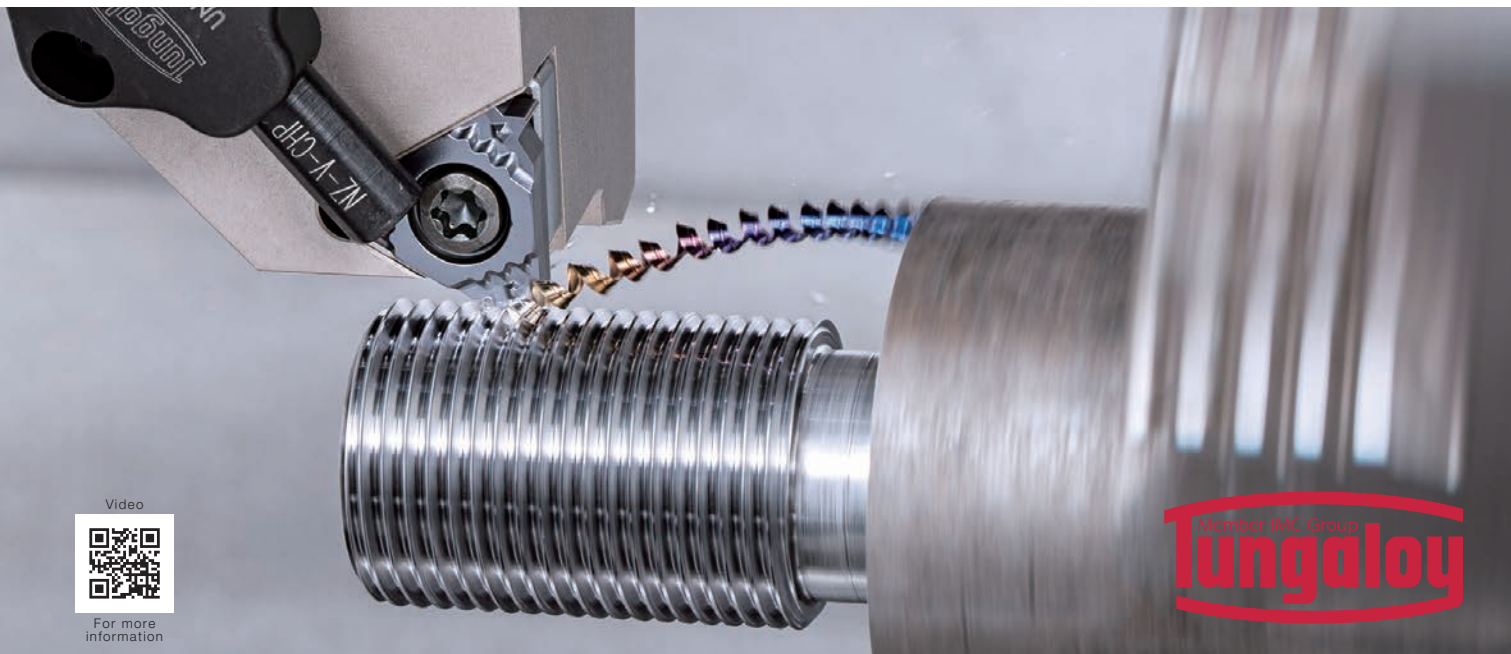
Insert:

3-cornered inserts sizes 11, 16 and 22

1-cornered insert size 6

Grade:

AH8015



Video



For more information

THREADING INSERTS WITH ECONOMICAL 4-CUTTING EDGES

Sharp cutting edge for reduced cutting load, improving thread surface quality.
Suitable for thread pitches ranging from 0.4 mm to 3 mm (8 - 64 TPI).

BUY 10 inserts

AND

GET 1 toolholder at

50 %
additional discount!

Insert:

TCT18R...-ISO (Full Profile insert) Pitch = 0.5 – 1.5 mm (16 - 48 TPI)

TCT18R...-UN (Full Profile insert) TPI = 16 - 32

TCT18R...-UNJ (Full Profile insert) TPI = 28 - 32

TCT18R...-W (Full Profile insert) TPI = 11 - 28

TCT18FR/R/L-60...(Partial profile insert) Pitch = 0.4 – 3.0 mm (8 - 64 TPI)

TCT18R/L-55...(Partial profile insert) TPI = 8 – 28

Grade:

AH725

AH8015

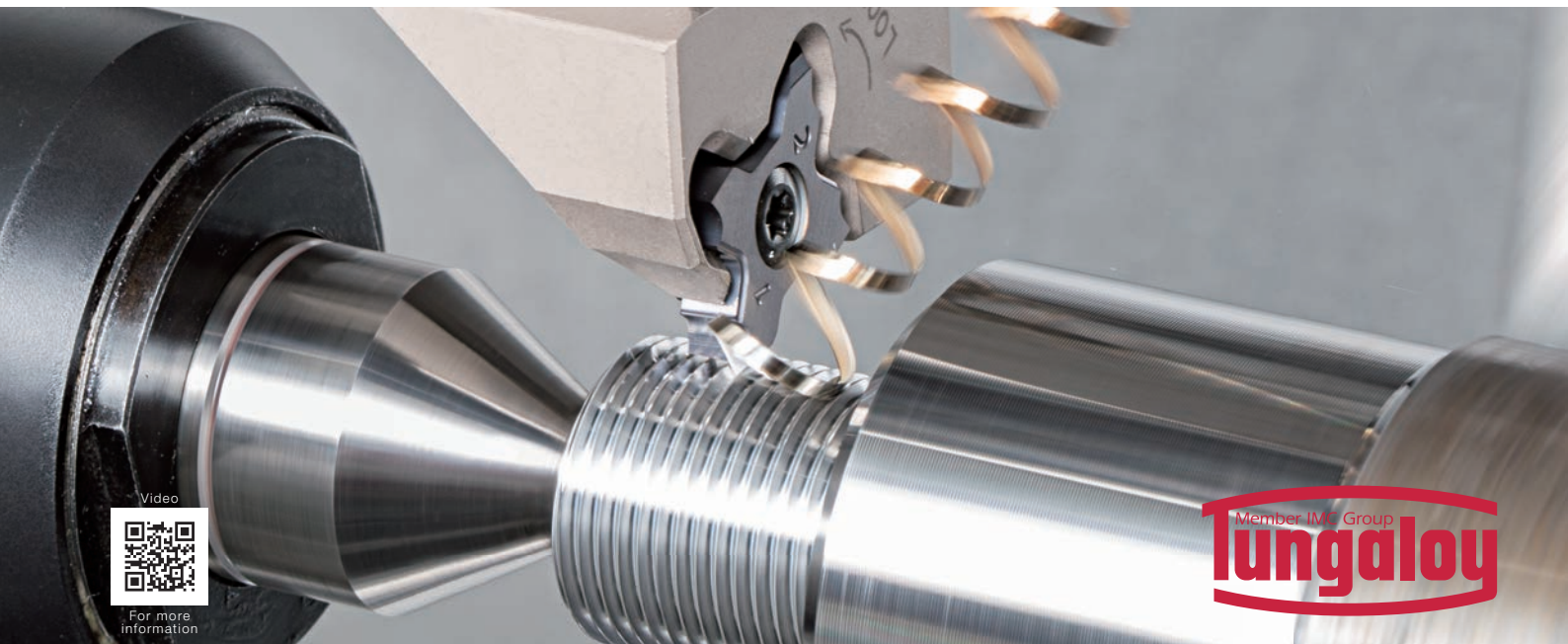
SH725



TCT18***-55/60...
Partial profile



TCT18...-ISO/UN/UNJ/W
Full profile



Video



For more information

SUPERB STABILITY AND PRODUCTIVITY IN DEEP GROOVING AND PARTING-OFF OPERATIONS

Newly designed insert profile ensures unobstructed chip flow and consistent chip evacuation.

BUY 20 inserts
AND
GET 1 blade, holder
or adaptor

FREE
of charge!

BUY 20 inserts
AND
GET 1 CHP blade or holder

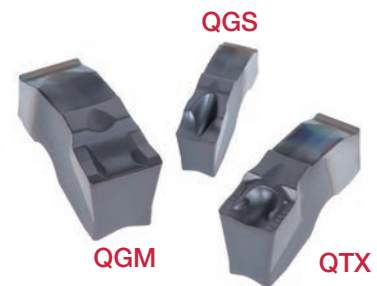
50 %
additional
discount!

BUY 10 inserts + 1 block
AND
GET 1 blade or holder

FREE
of charge!

BUY 10 inserts + 1 block
AND
GET 1 CHP blade or holder

50 %
additional
discount!



Inserts

QGM, QGS and QTX inserts
(AH7025, AH6235)

CW = 0.079", 0.118", 0.157",
0.197, 0.236" and 0.315"
(2, 3, 4, 5, 6 and 8 mm)

Max. grooving depths

CDX = 1.29" (33 mm)
(for monoblock shanks)

NOTE:

Please inquire with your local
Tungaloy representative
regarding the tool holders
offered in this promotion.



Video



For more
information



NEW DOUBLE-ENDED SMALL-SIZE INTERNAL GROOVING INSERTS WITH ROBUST DESIGN

Economical inserts for internal grooving, DMIN = 12 mm

BUY 20 inserts

AND

GET 1 head or holder

FREE
of charge!

Grade: AH7025

Toolholder for internal grooving:
CTIR**S

Cutting heads for BoreMeister Series:
S**-CTIR..-H

DGS*S type
(2 corners)



DTR*S type
(2 corners)



Video



For more information

HIGH PRECISION GROOVING AND THREADING TOOL SERIES FOR CNC AUTOMATIC LATHES

Perfect for grooving and threading bar stocks of 0.472" (12 mm) or smaller diameters

BUY 10 inserts

AND

GET 1 toolholder
or **1** head

FREE
of charge!

BUY 10 inserts

AND

GET 1 **CHP** toolholder

50 %
additional
discount!

Insert:

VGP08/10 (for Grooving)

CW = 0.33 - 1 mm (0.012" - 0.039")

Insert:

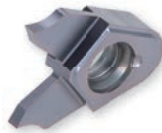
VGT10F (for Threading)

Pitch = 0.4 - 2 mm

TPI = 12 - 64

Cutting edge angle = 55°, 60°

VGP08/10

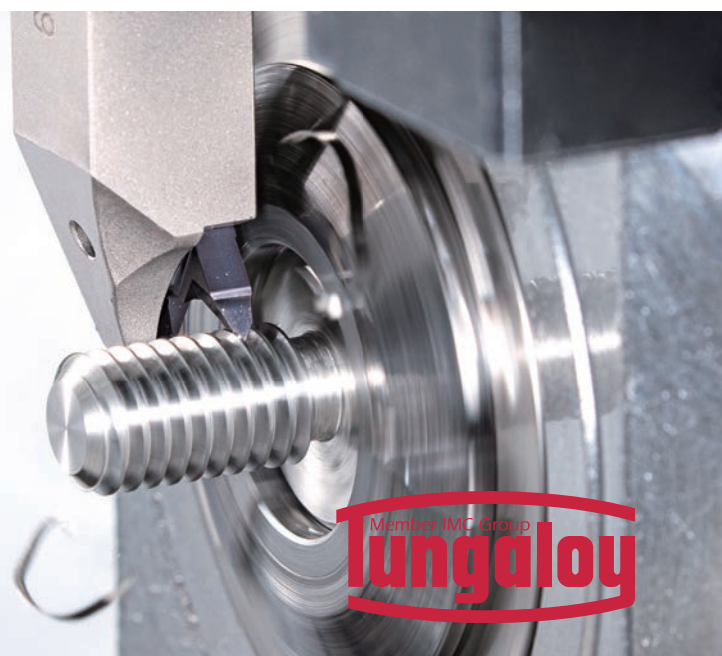
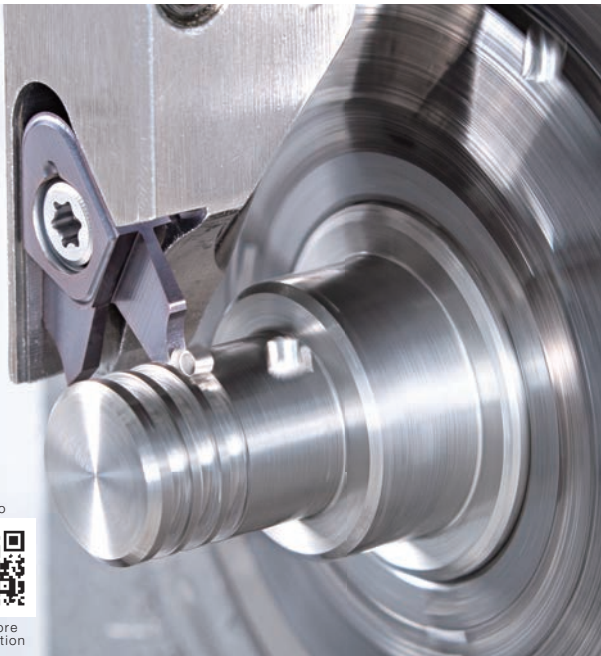


VGT10F



Toolholder:

All



Video



For more information

INNOVATIVE TURNING TOOL SERIES FOR CNC AUTOMATIC LATHES AND CAM-DRIVEN LATHES

Ideal for machining small parts of 0.472" (12 mm) or smaller diameters

BUY 10 inserts

AND

GET 1 toolholder

FREE
of charge!

Inserts:

JVPN**R/L (for Grooving and Parting-off)

CW = 0.5, 0.6, 0.8, 1 mm (0.020", 0.024", 0.031" and 0.039")

JVFN45R/L (for Front Turning)

JVNR/L (Blank insert)

Toolholder:

0606, 0707, 0808, and 1010 type

JVPN**R/L



JVFN45R/L



JVNR/L



Video



For more information

MULTI-FUNCTION SOLUTION FOR A WIDE RANGE OF OPERATIONS

Innovative four-edged inserts provide ultimate machining flexibility and economy. All-round cutter with center cutting capability provides ultimate machining versatility

BUY 10 inserts per
AND pocket
GET 1 Cutter

FREE
of charge!



Insert:

LXMU-MM (AH120, AH3225, AH8015)



Shank type:

EVLX06/08/10/12/16/19...

(Short type) DC = $\varnothing 0.500'' - \varnothing 1.500''$

(Short type) DC = $\varnothing 12 - \varnothing 40$ mm

EVLX06/08/10/12/16/19...L

(Long type) DC = $\varnothing 0.500'' - \varnothing 1.500''$

(Long type) DC = $\varnothing 12 - \varnothing 40$ mm

Modular type:

HVLX06/08/10/12/16...

DC = $\varnothing 12 - \varnothing 33$ mm

LXMU-MM

Size 06:

APMX 0.197", 5 mm

Tool dia.: $\varnothing 0.500''$

$\varnothing 12 - \varnothing 13$ mm

Size 08:

APMX 0.276", 7 mm

Tool dia.: $\varnothing 0.625''$

$\varnothing 16 - \varnothing 17$ mm

Size 10:

APMX 0.354", 9 mm

Tool dia.: $\varnothing 0.787''$

$\varnothing 20 - \varnothing 21$ mm

Size 12:

APMX 0.433", 11 mm

Tool dia.: $\varnothing 1.000''$

$\varnothing 25 - \varnothing 26$ mm

Size 16:

APMX 0.570", 14.5 mm

Tool dia.: $\varnothing 1.250''$

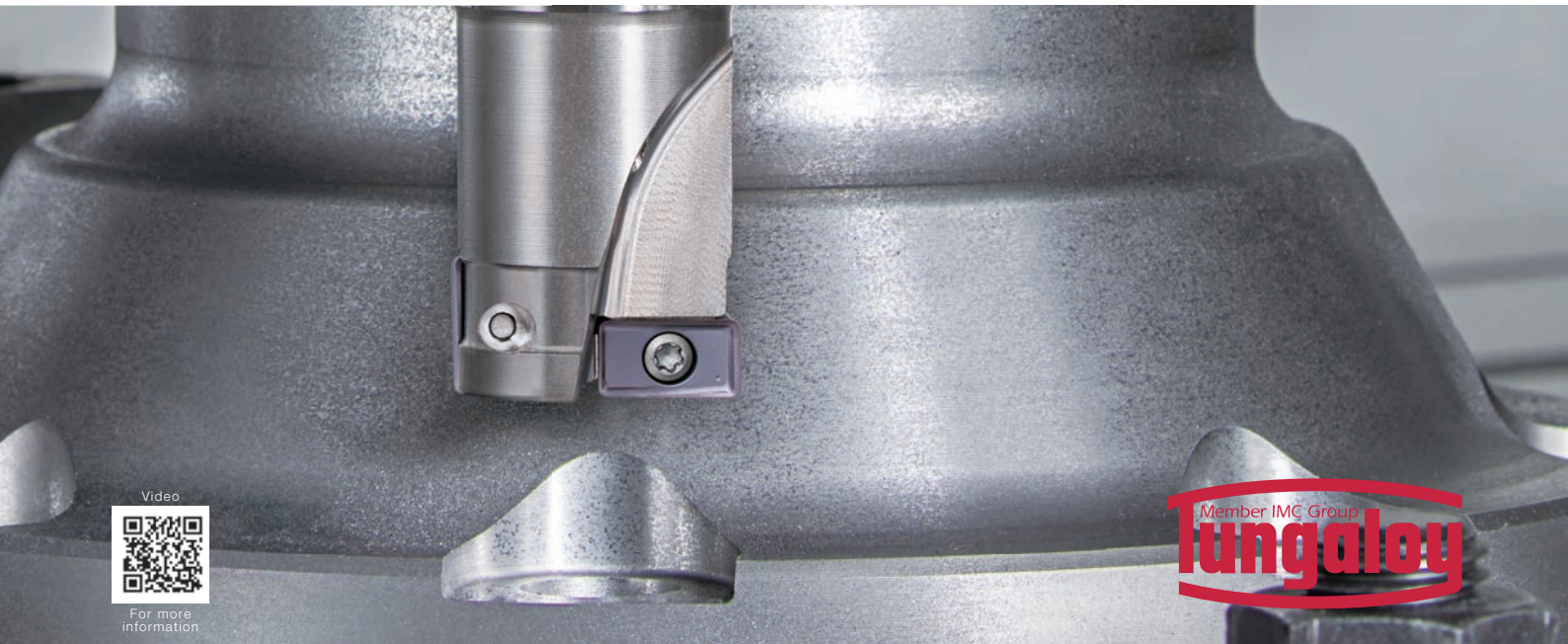
$\varnothing 32 - \varnothing 33$ mm

Size 19:

APMX 0.708", 18 mm

Tool dia.: $\varnothing 1.500''$

$\varnothing 40$ mm



HIGHLY-VERSATILE FACE MILLING CUTTERS FOR A WIDE VARIETY OF MATERIALS

DoTriple-Mill features an improved dovetail clamping structure and offers triple advantage of using square, octagonal, and round inserts in the same pocket

BUY 10 inserts per pocket up to max 50 inserts
AND
GET 1 Cutter

FREE
of charge!

Limited up to diameter 5" (125 mm)

Insert:

SN*U-MJ/MH/W (AH120, AH3135, AH3225, T1215, T3225)
APMX = 6 mm (0.236")

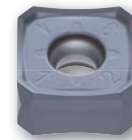
ON*U-MJ/W (AH120, AH3135, AH3225, T1215, T3225)
APMX = 3.4 mm (0.134")

RNMU-MJ (AH120, AH3135, AH3225, T1215, T3225)
APMX = 6 mm (0.236")

Bore type:

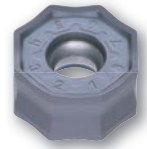
TASN13

DC = $\varnothing 2'' - \varnothing 5''$, $\varnothing 50 - \varnothing 125$ mm



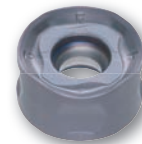
SN*U

Double-sided, square insert



ON*U

Double-sided, octagonal insert



RNMU

Double-sided, round insert



Video



For more information

ULTIMATE HIGH FEED MILLING CUTTER SERIES FOR MAXIMUM PRODUCTIVITY

High-feed cutters reduce machining time in a wide range of applications

BUY 10 inserts per pocket
AND
GET 1 Cutter
up to max 50 inserts

FREE
of charge!



LN*U0303ZER...
For low cutting forces



LN*U0303UER...
For long tool life and reduced vibration

Limited to inserts 03 type

Insert:

LN*U03-MH/MJ/ML/MS
(AH130, AH3225, AH725, AH120, AH8015, AH8005)
APMX = 0.035" - 0.039"

Shank type:

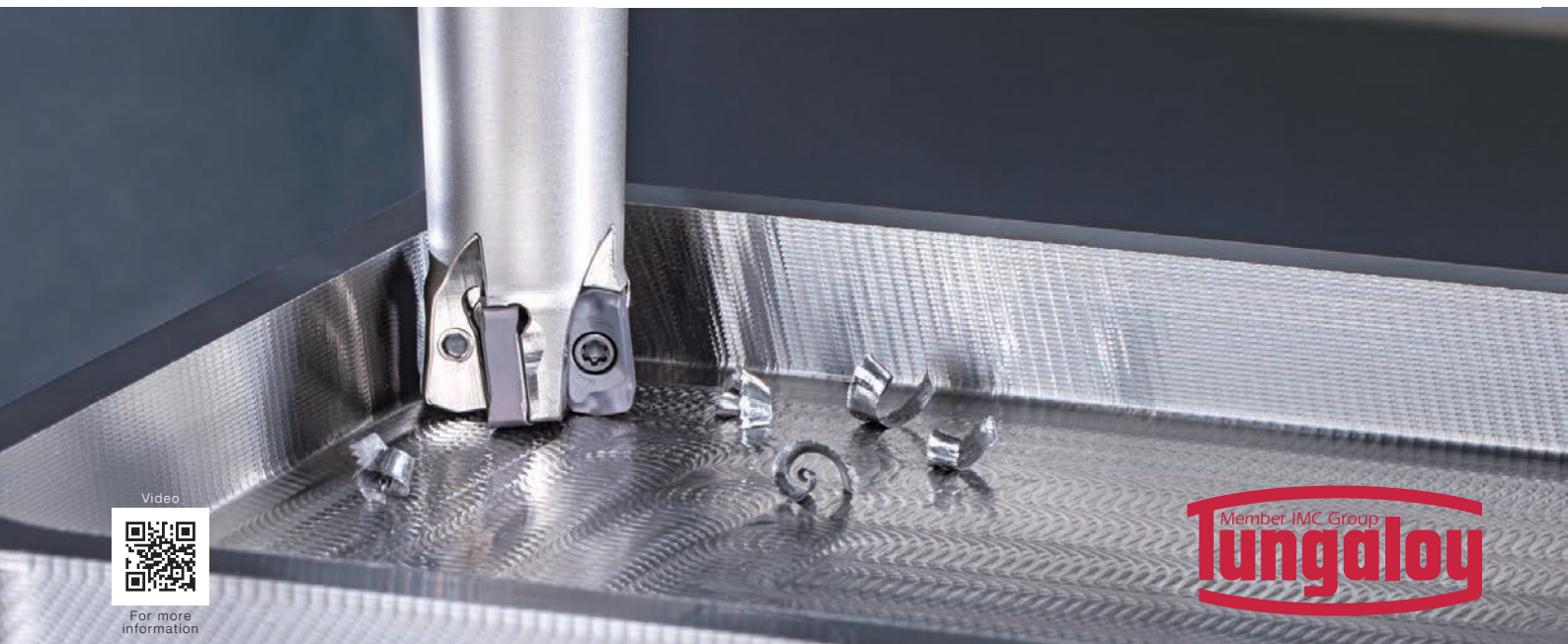
EXN03R... (Short type)
EXN03R...L/EXN03R...L-C (Long type)
DCX = $\varnothing 0.625"$ - $\varnothing 1.500"$, $\varnothing 16$ - $\varnothing 40$ mm

Bore type:

TXN03R...
DCX = $\varnothing 1.50"$ - $\varnothing 2.00"$, $\varnothing 40$ - $\varnothing 50$ mm

Modular type:

HXN03R...
DCX = $\varnothing 16$ - $\varnothing 40$ mm



Video



For more information

PROFILING CUTTER FOR 3-DIMENSIONAL MACHINING DUE TO HELICAL CUTTING EDGES

Unique twisted insert geometries assures secure insert clamping for high stability.
Two types of inserts fit one cutter: radius and high efficiency inserts.

BUY 10 inserts per pocket
AND up to max 50 inserts
GET 1 Cutter

FREE
of charge!

Insert:

LNMX04/05/06-MJ/ML (Radius type)
(AH3135, AH120, AH8015, AH3225)
APMX = 0.157" - 0.236"

LNMX04/06-HJ/HL (High-feed type)
(AH3135, AH120, AH8015, AH3225)
APMX = 0.051" - 0.079"

Shank type:

EXLN04/05/06R... (Short type)
EXLN04/05/06R**L... (Long type)
DCX = $\varnothing 0.787'' - \varnothing 2.000''$, $\varnothing 20 - \varnothing 40$ mm

Modular type:

HXLN04/05/06R...
DCX = $\varnothing 20 - \varnothing 42$ mm

Bore type:

TXLN04/05/06R...
DCX = $\varnothing 1.50'' - \varnothing 3.00''$, $\varnothing 40 - \varnothing 66$ mm



LNMX...MJ / ML
Radius insert

LNMX...HJ / HL
High-feed insert



Video



For more information



Tungaloy-NTK America Inc.
3726 N. Ventura Drive, Arlington Heights, Illinois, 60004, U.S.A.
TEL: +1-888-554-8394
FAX: +1-888-554-8392
info@tungaloy-ntk.com
tungaloy.com/us

Leading in Innovation

Distributed by:



 FIND US ON THE CLOUD!
machiningcloud.com

Jan. 2024 (TJ)